



Announcing the NEW Fountain Creek Brewshed® Alliance

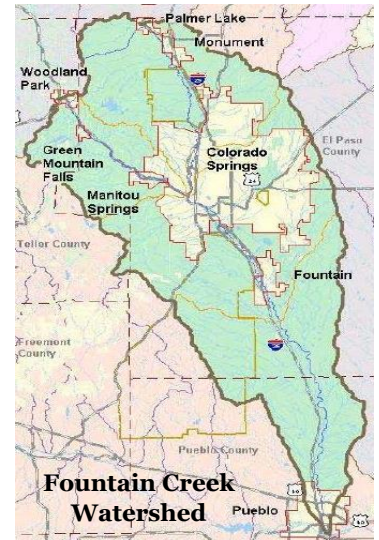
A program of the Fountain Creek Watershed Flood Control and Greenway District



What: A group of water resource and craft brewing industry professionals connecting our communities to the shared values of healthy watersheds and locally made beer through education and events.

Where: The first Brewshed® Alliance was established in 2012 in Washington State. Oregon and Idaho followed. We are the first Brewshed™ Alliance in Colorado, working throughout the Fountain Creek Watershed (Palmer Lake to Pueblo).

Why: To engage citizens in conversations and actions that will lead to water protection and enhancement.



Fountain Creek Brewshed® Alliance



Who:

- Fountain Creek Watershed Flood Control and Greenway District Citizen’s Advisory Group and Creek Week Committee
- Colorado Springs Utilities (Watershed Planning, Laboratory Services and Public Affairs)
- City of Colorado Springs Water Resource Engineering Division
- Greenway Fund Events and Communications Committee
- Colorado College State of the Rockies project
- Planet of Awe (nonprofit fiscal sponsor)
- Alliance Member Breweries:

Bristol Brewing Co.
Fieldhouse Brewing Co.
Fossil Craft Beer Co.

Pikes Peak Brewing Co.
Peaks N Pines Brewery
Smiling Toad Brewing Co

Triple S Brewing Co.
More to come!

How: Engage Brewshed® Alliance Members, staff and patrons in watershed health education and actions that protect our precious water resources. Contact aplute@csu.org for information.